



aimswEBPlus Parent FAQ

- Grades 2-5

What is aimswEBPlus?

aimswEBPlus is a type of test known as a universal screener. The test has multiple parts called “measures”. In the School District of Philadelphia, we use aimswEBPlus to evaluate math and English literacy skills for all students in kindergarten through fifth grade and for special education students in sixth through eighth grade. We also use it to identify students at risk of not meeting their academic goals so we can create early intervention plans and monitor the effectiveness of those plans.

Why are we doing this? Does this affect my student’s grade?

aimswEBPlus enables students to demonstrate what they already know and to identify what they need to learn. This test does not affect students’ grades. It only helps the teacher understand how to individualize instruction for students.

When will my child take this test?

There are three times a year that students will take aimswEBPlus: fall, winter, and spring. Teachers will schedule testing times and communicate this to caregivers and students.

How does my child take this? (Technology)

- Students will need a computer or tablet that has a camera and audio (speaker and microphone).
- In addition, they will need an internet connection and a web browser such as Chrome, Firefox, or Safari.
- Students will take all aimswEBPlus measures except one using an app called TestNav. Please refer to the stepper included at the end of this document for directions on how students should access TestNav.
- The one measure not given on TestNav will be administered directly by the student’s teacher.
- Teachers will use Google Meet or Zoom to monitor testing and assist students. Please assist your child with joining Meet/Zoom and TestNav if necessary.

How can I set my child up for success?

- Find an area where students can sit comfortably with a computer/device in front of them and see the screen clearly.
- Choose a location without distracting sights and sounds (such as TVs or loud conversations).
- Make sure students are well rested, have eaten, and used the bathroom. Encourage them to do their best work.

- Explain that you may assist with technology set-up but that you cannot give them answers or clues to test questions. Tell students that they will work with their teacher like they do during testing in school.

Do's and Don'ts for Testing:

DO:

- Make sure that the student is seated comfortably in front of the computer/tablet.
- Help manage the student's behavior with physical or verbal prompts.
- Make sure that the student continues to look at the screen throughout the test.

DON'TS:

- Don't restate directions to the student. Directions should come from only the TestNav application or the teacher.
- Don't provide answers or clues to the answers. Clues could include pointing to an answer, covering up wrong answers, giving reminders, or looking directly at the item.
- Don't tell students whether their answer is right or wrong (such as by nodding, smiling, or telling them).
- Don't give feedback or ask questions to the teacher during a test. Many tests are timed and this will interfere with the student's score. Wait until the test is over if you have questions or feedback.

Remember: The purpose of this test is to let teachers know what supports your student needs.

Helping with answers will not let teachers know what skills your student still needs to learn.

Where can I find the results from the test?

Results from the test will be available at the end of the testing window in late October through the Parent Portal. When in the portal, click the Standardized Tests tab. If you need help understanding the results, please contact your student's teacher. If you need help getting into the Parent Portal, look here: <https://www.philasd.org/face/fr/parent-and-family-portal/>

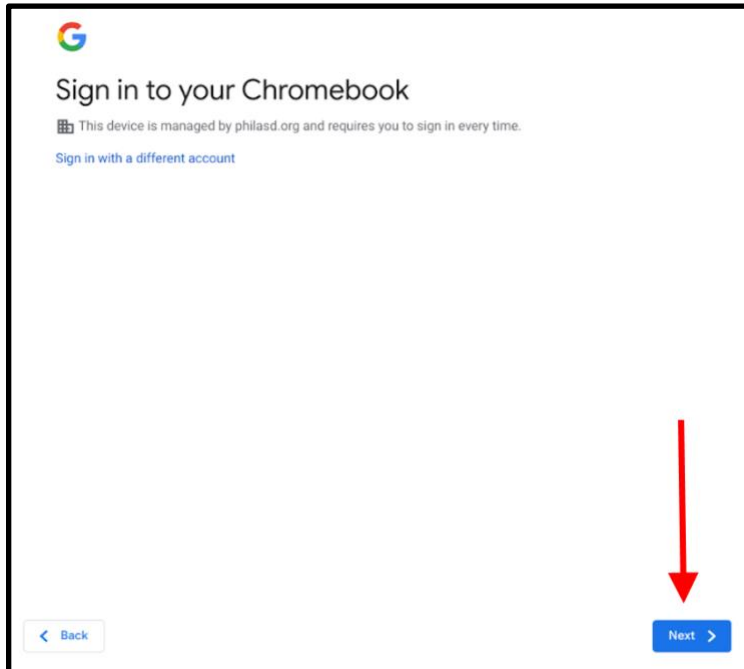
Who can I contact for help?

Technology Questions: Call the Parent & Family Technology Support Hotline at 215-400-4444

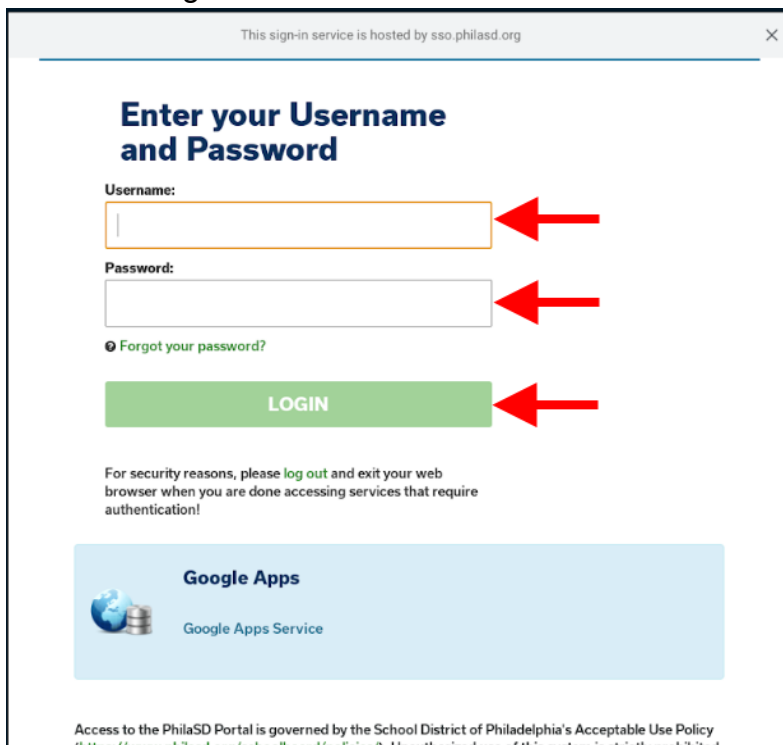
General Testing Questions: Contact your students' teacher

How to Access “TestNav” for aimswebPlus Testing on Chromebooks

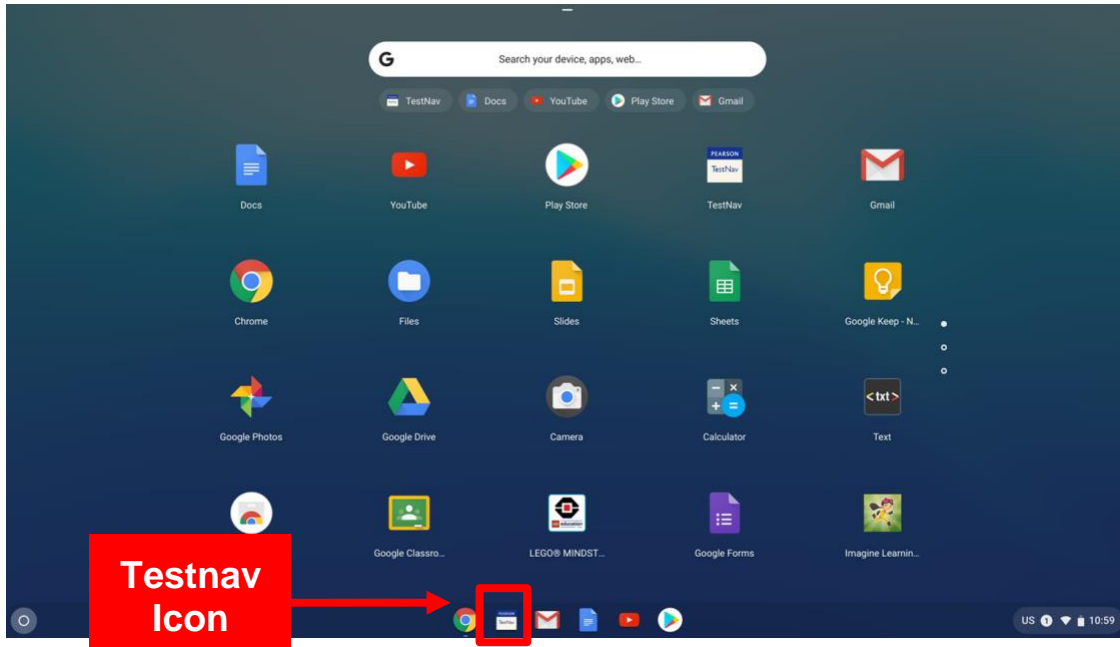
1. Turn on the Chromebook.
2. At the landing page click on “Next”.




3. Enter your username and password.
4. Click on the green “LOGIN” button.

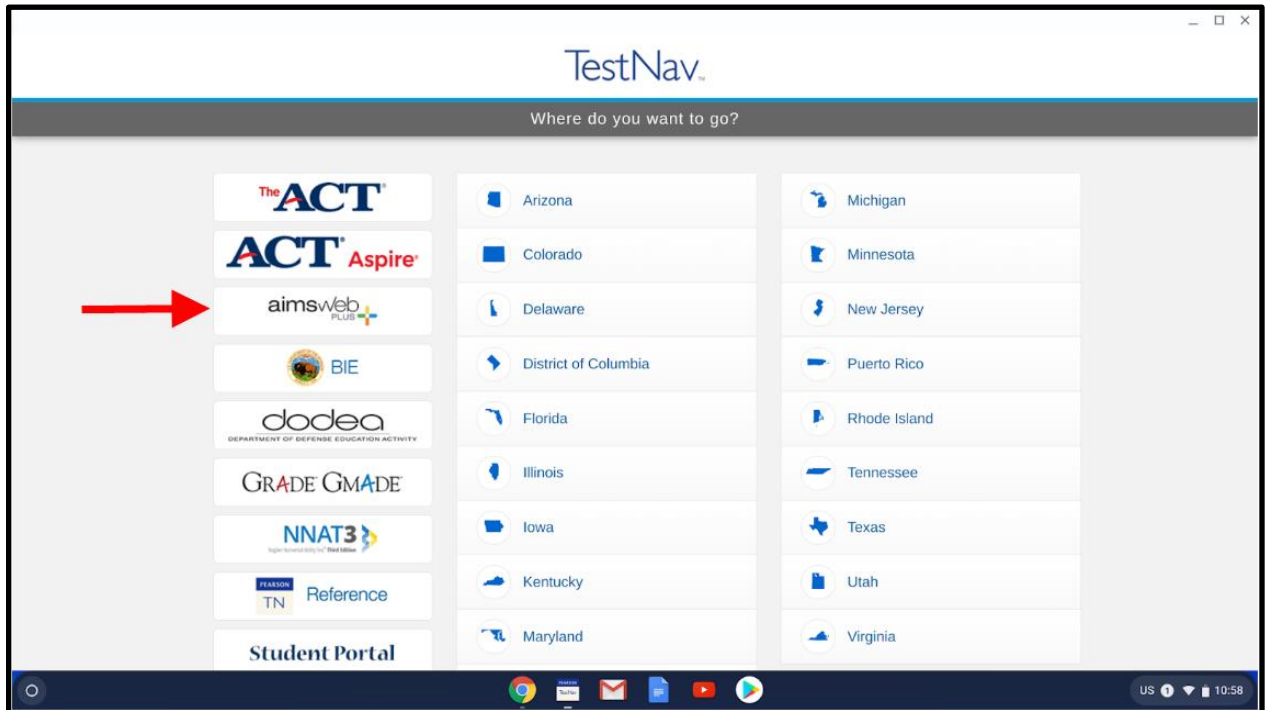


5. Click on the “TestNav” icon at the bottom of the screen.

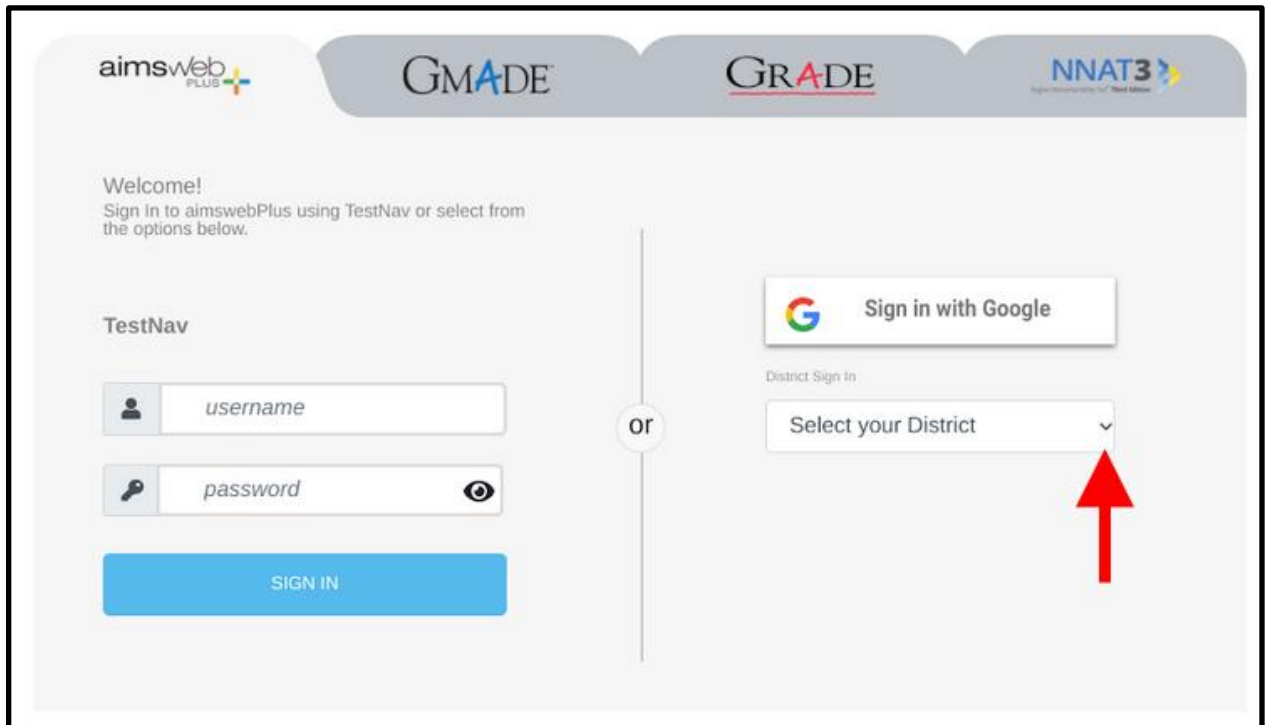


6. If you clicked on the “TestNav” icon, go to step 7 now. If you do not see the “TestNav” icon, open your Chrome browser  and type in the address bar “aps.testnav.com” and press the “Enter” key on your keyboard. Then go to step 8.

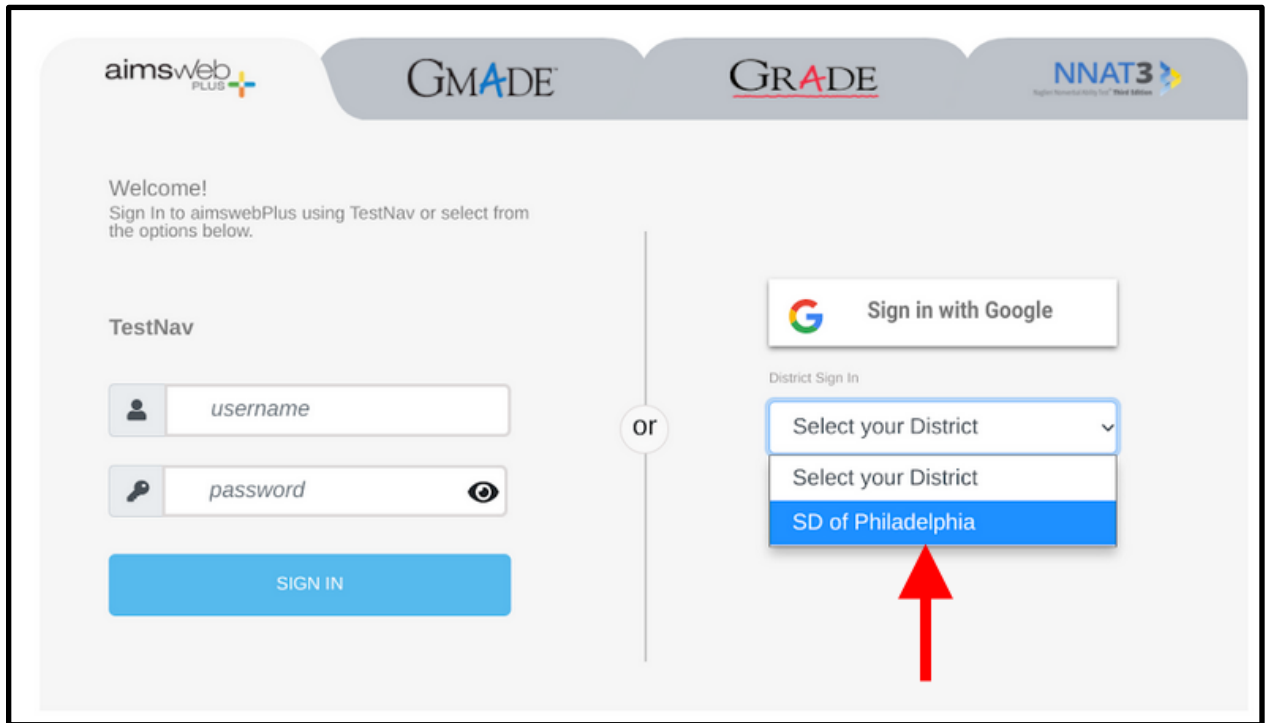
7. Select “aimswebPLUS”.



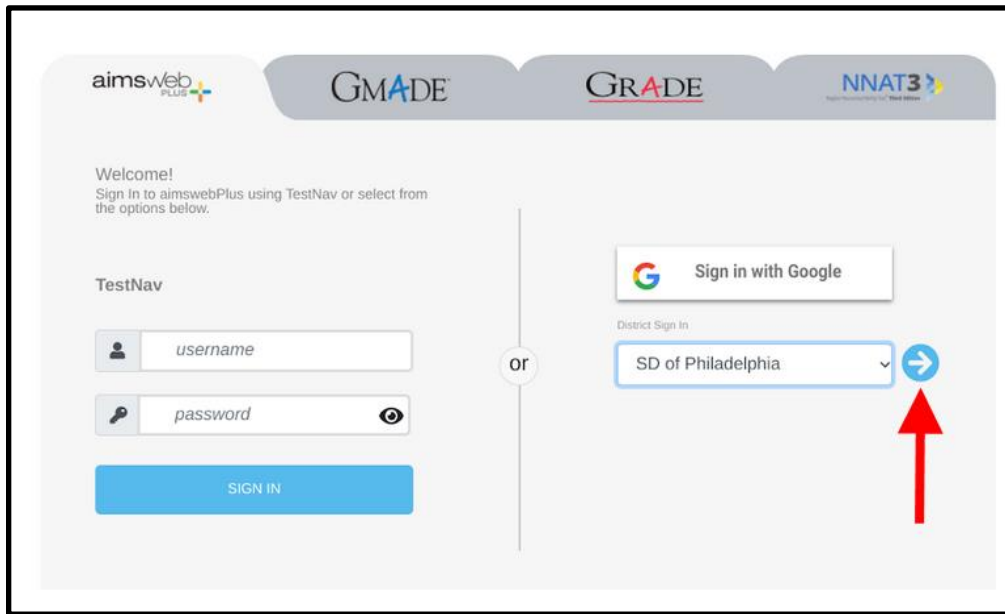
8. Click on the arrow next to “Select your District”.



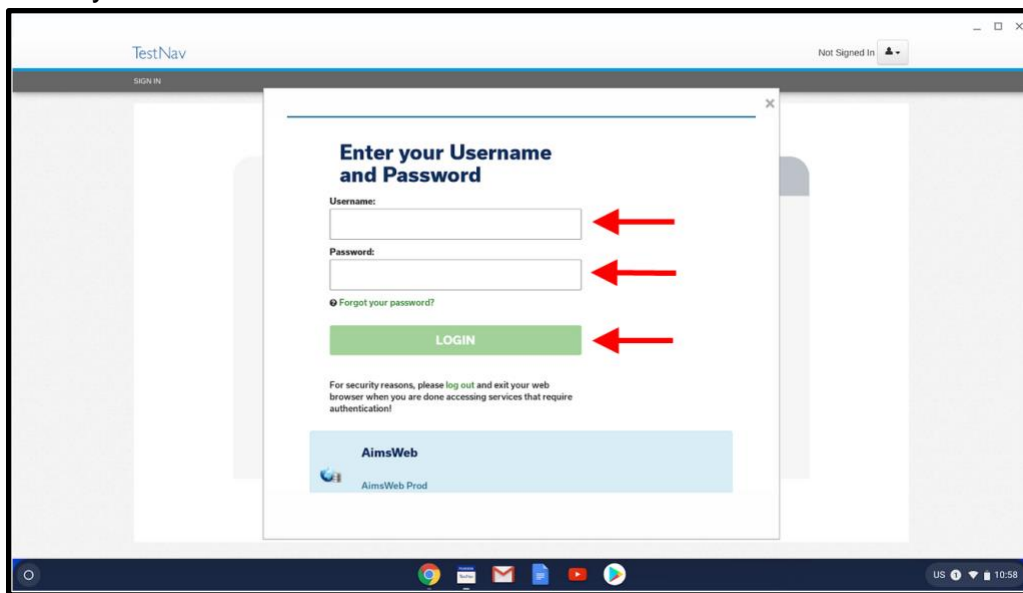
9. Select "SD of Philadelphia".



10. Click on the arrow to the right of "SD of Philadelphia".



11. Enter your Username and Password.



12. Click on the green “LOGIN” button.

13. Select the assigned test and click “Start” when instructed to do so by your teacher.

